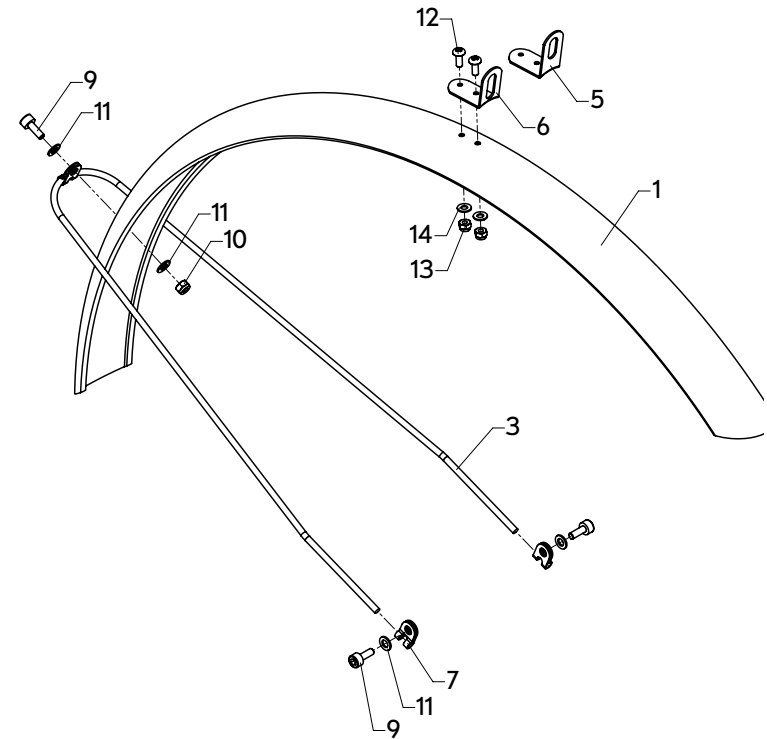
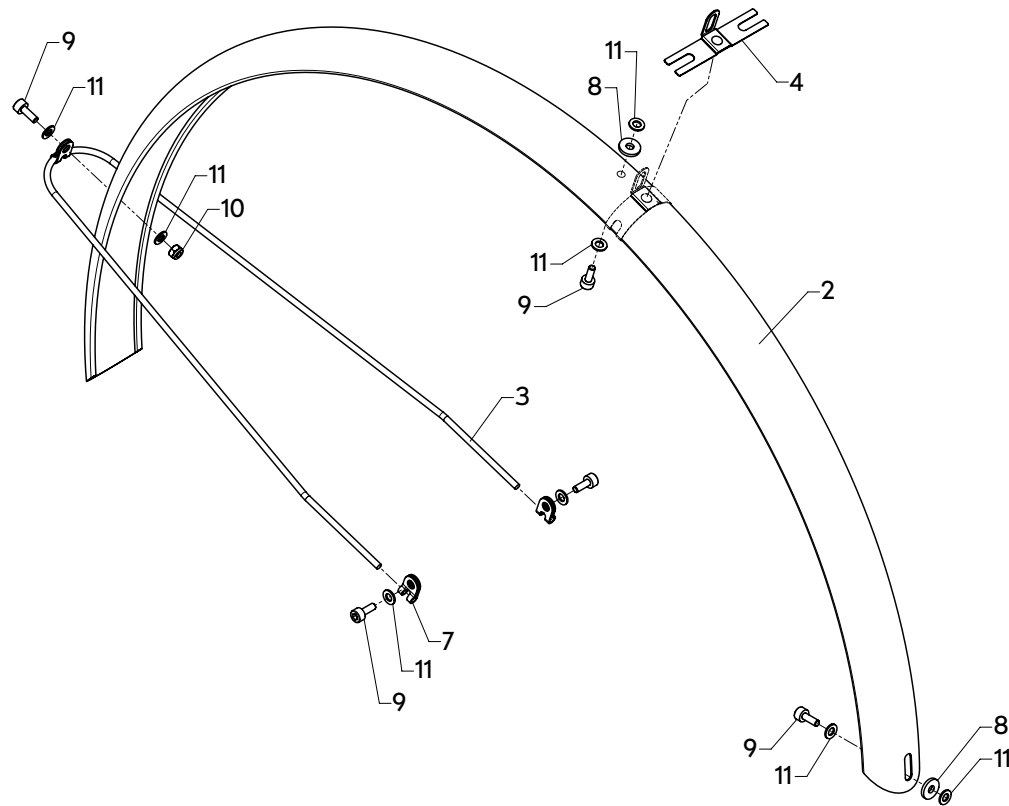


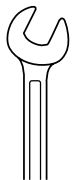
FENDER SET 2017 ASSEMBLY INSTRUCTIONS



PARTS LIST

Part no.	Part name	Q'ty
1	Fender, Front	1
2	Fender, Rear	1
3	Fender stay	2
4	Seat stay mounting clamp (optional)	1
5	L plate, H:30 (optional)	1
6	L plate, H:25 (optional)	1
7	R-clamp	6
8	Leather washer (optional)	2
9	Bolt, M5*12	8
10	M5 nut	2
11	M5 washer	12
12	Bolt, M4*8	2
13	M4 nut	2
14	M4 washer	2

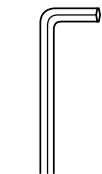
REQUIRED TOOLS (NOT INCLUDED IN THE SALES PACKAGE)



8MM NUT
 SPANNER



10MM NUT
 SPANNER



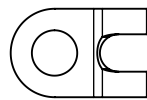
4MM HEX
 WRENCH

TIGHTENING TORQUES

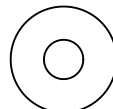
M5 _____ 6NM
 M6 _____ 8NM

**ALWAYS TIGHTEN
 FASTENERS TO THE
 CORRECT TORQUE**

SCREW SET (1:1)



#7



#8



#9



#12



#10



#13

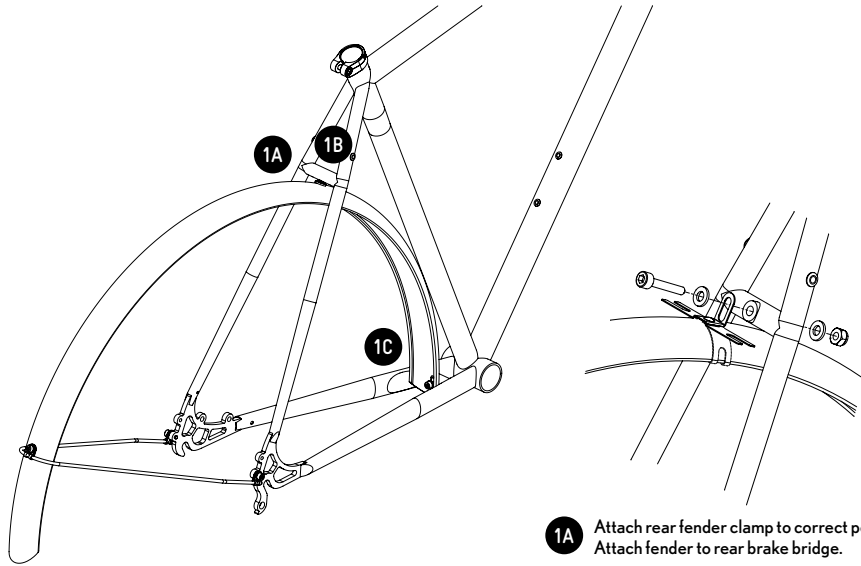


#11

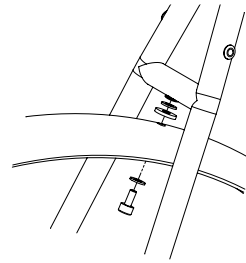


#14

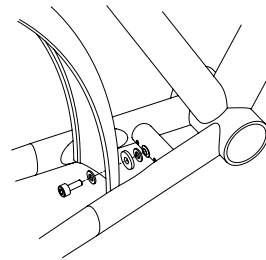
- 1** Check Fender fit.
Choose correct installation option for rear brake bridge.



- 1A** Attach rear fender clamp to correct point.
Attach fender to rear brake bridge.

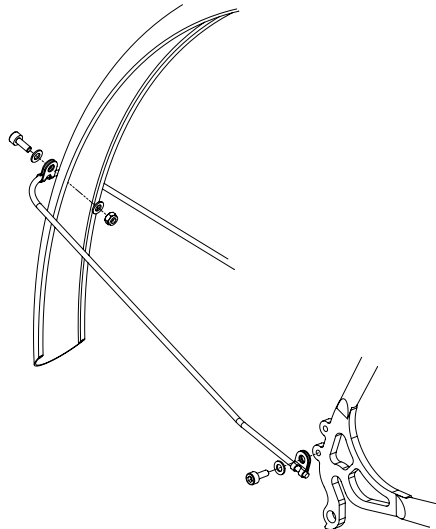


- 1B** Check fit and drill hole on fender.
Attach fender to brake bridge.

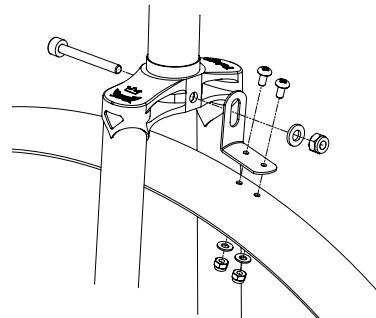


- 1C** Attach fender at the rear
of bottom bracket.

- 2** Attach stays to rear fender.
Attach stays to rear dropouts.
Cut stays to correct length if needed.



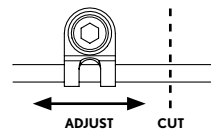
- 3** Attach L-bracket to front fender.
Attach L-bracket to fork crown*.
Attach stay to front fender.



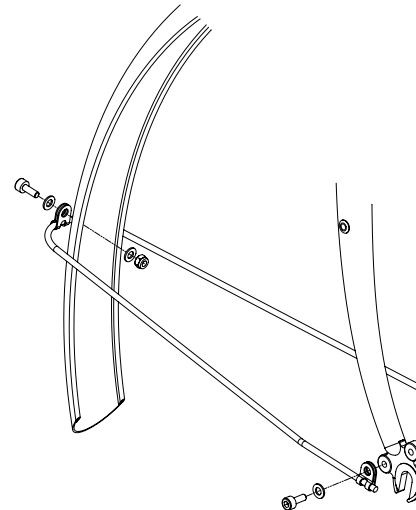
* (M6 bolt not included in package)

FENDER STAY ADJUSTMENT

Adjust stay length, cut excess stay and file smooth.



- 4** Attach stay to front dropouts.
Cut stays to correct length if needed.



PRODUCT INFO

PLEASE TAKE NOTE BEFORE ASSEMBLING THE FENDERS TO YOUR BICYCLE

1. Make sure your bicycle has the necessary eyelets to mount the fenders
2. The product is designed to fit regular bicycles with 700C wheels and rigid front fork
3. Make sure that your bicycle has enough clearance to fit fenders
4. The package includes small parts - Keep away from children under 3yrs
5. Follow the assembly instructions carefully
6. In any assembly problem turn to a professional bicycle mechanic
7. Any kind of structural changes made to the fenders are strictly forbidden
8. Improper assembly can lead to product failure

PLEASE TAKE NOTE WHEN FENDERS ARE IN REGULAR USE

1. Check the tension of all mounting screws and bicycle attachment points regularly
2. Tighten all bolts to their stated Nm torques. A precise tightening torque will be achieved with a torque wrench
3. Do not attach any pressure- or clamp-style attachments to any parts of the carrier
4. Make sure the fenders don't touch either of the wheels or any other moving parts of the bicycle
5. Any type of physical or technical alterations to the fenders are strictly forbidden
6. Make sure that all required reflectors and lights are visible and not covered by fenders

WARRANTY

1. Guarantee of a Pelago product applies only to total product failure or breakage
2. Any other damage resulting from scratches, rust, improper mounting or deformation are excluded from the warranty
3. Only the original owner of the product is entitled to make a guarantee claim

Liability arising from errors or mistakes is not accepted.
Pelago reserves the right to any changes without prior notice.

MANUFACTURER

Pelago Mfg Ltd.
Helsinki, Finland
info@pelagobicycles.com
TEL +358 (0)45 161 6847

Pelago
BICYCLES