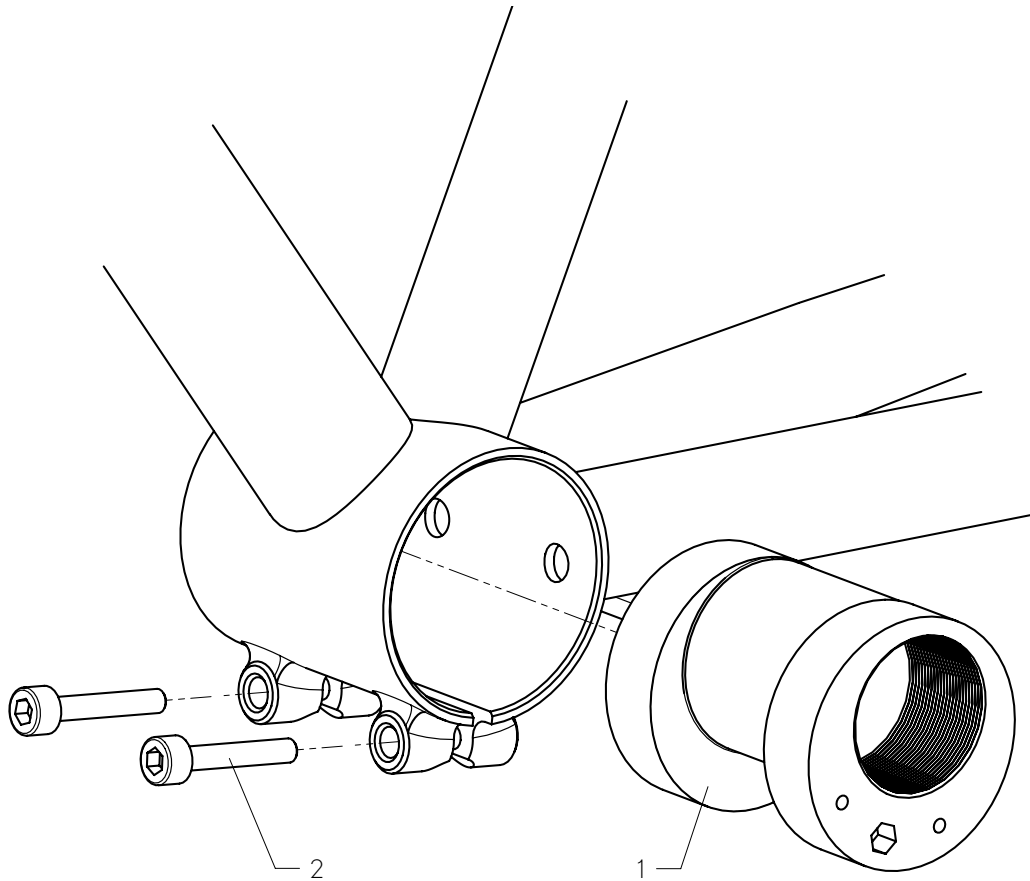




# ECCENTRIC BOTTOM BRACKET ADJUSTMENT INSTRUCTION



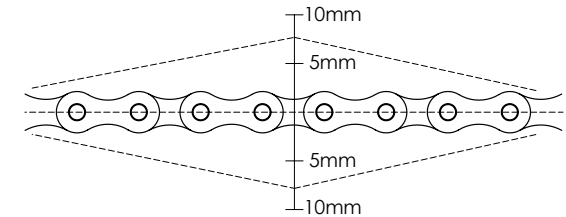
The Eccentric Bottom Bracket is used to adjust the tension of the chain of the bicycle. In bicycles using derailleur gears the EBB can be used for micro adjustments to BB ground clearance (up/down) and fore-aft position (front/back).

**WARNING**  
Incorrectly adjusted Eccentric Bottom Bracket is unsafe to ride and it can cause the cyclist to have an accident. If you don't understand these instructions or if you have any other problems regarding the EBB parts of your bicycle please consult a professional bike mechanic.

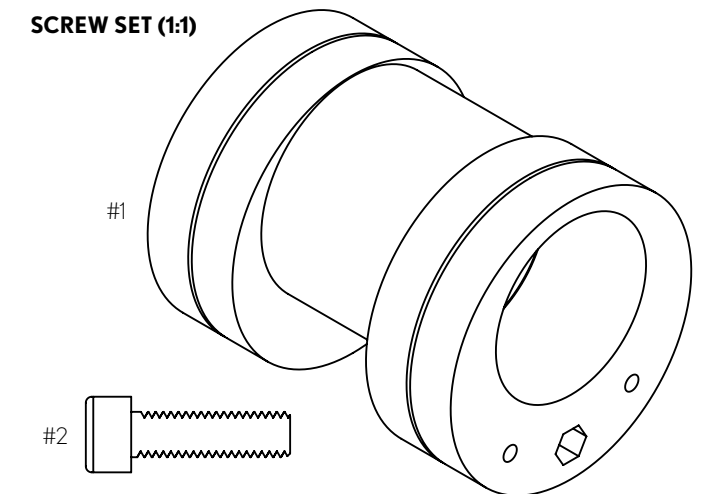
**WARNING**  
The chain tension should be checked periodically to make sure it's not too tight or too loose. A loose chain may drop off the drivetrain and can lead to an accident. A tight chain will prematurely wear or even break drivetrain components which can also lead to an accident.

## HOW TO MEASURE CHAIN TENSION

When checking chain tension the chain should be well lubricated and in a good overall condition. The chain should have about 1/4 inches or 5-10mm of vertical play. Measure this at the center between the chainring and rear sprocket either at the top or bottom length of the chain. If you have less play the chain is too tight, if you have more play it's too loose. Rotate the crank to measure different sections of the chain.



## SCREW SET (1:1)

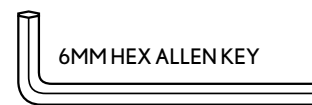
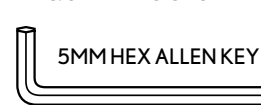


### MANUFACTURER

Pelago Mfg Ltd.  
Helsinki, Finland  
info@pelagobicycles.com  
TEL +358 (0)45 161 6847



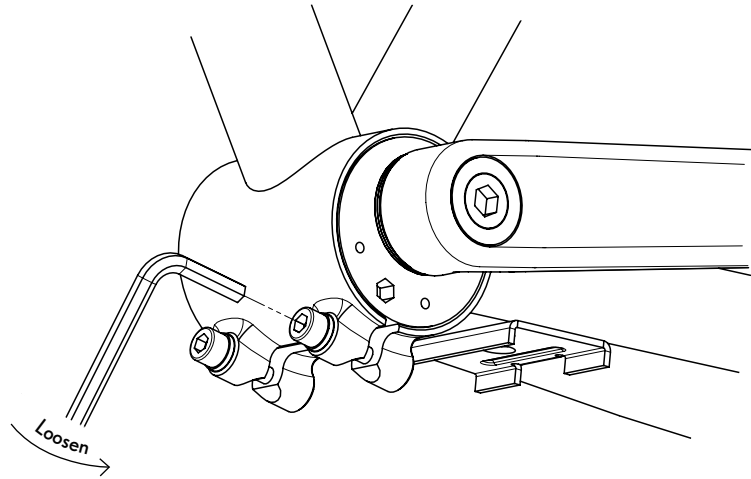
### REQUIRED TOOLS



1

Loosen the allen key bolts under the bottom bracket to unlock the position of the EBB.

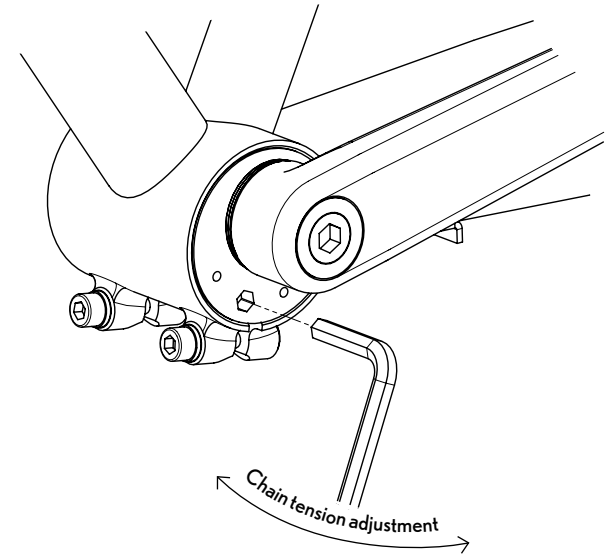
**NOTE** It is easier to adjust the EBB cartridge into the right position if the allen key bolts are not completely loose and you can feel some friction while rotating the EBB cartridge. This prevents the EBB from slipping out of tune when re-tightening it.



2

The left side (non-drive side) of the EBB has a 5mm allen key slot. Insert the allen key to rotate the cartridge to adjust chain tension.

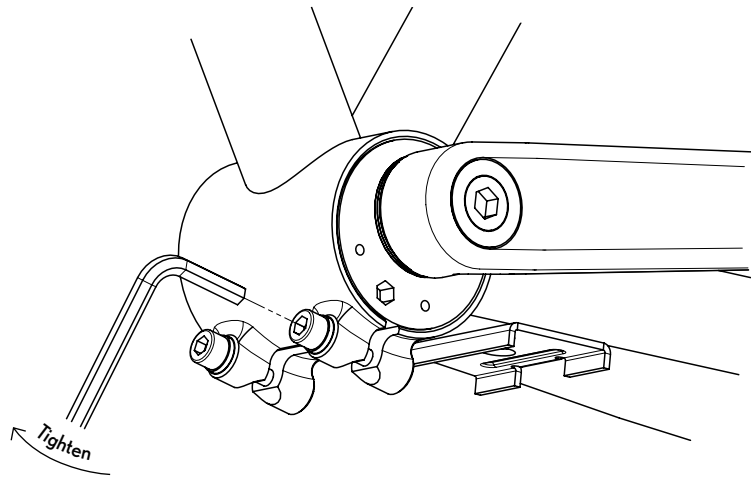
**NOTE** This image represents the rotational directions while the bottom bracket is at the top end of the EBB.



3

When the chain is at the correct tension tighten the right and left side bolt in turns little bit at a time so that both are evenly tensioned to 8-9Nm tension.

**▲ WARNING** Make sure the aluminium shell remains centered in the frame so that the chain line also remains straight. An unaligned chain can come off the bike while riding and lead to an accident. If you have problem adjusting the chain tension, please consult a professional bike mechanic.



4

Measure chain tension again. If the tension is not correct, re-adjust the EBB until you get the chain tension correct.

**▲ WARNING** Screws on the EBB should always be at a 8-9Nm tension. The screws are adjusted with a 5mm allen key. If you have problems with achieving the correct chain tension, please consult a professional bike mechanic.

